

An architectural rendering of a three-story brick building with a gabled roof and a dormer. The building is surrounded by a green lawn, a hedge, and a parking area with several cars. People are shown walking and cycling near the entrance. The sky is blue with light clouds.

A

HALLWOOD PARK PROGRESS REPORT

JULY 2023



Hallwood Park Aerial, Weston Link View

HALLWOOD PARK

27 Apartments | Affordable Rent Scheme

Start On-Site Date: April 2022

Ground Floor

- 2 x 1 Bedroom Apartments
- 5 x 2 Bedroom Apartments
- Hard and Soft Landscaping
- Car Park
- Cycle Storage

Floors 1 - 3

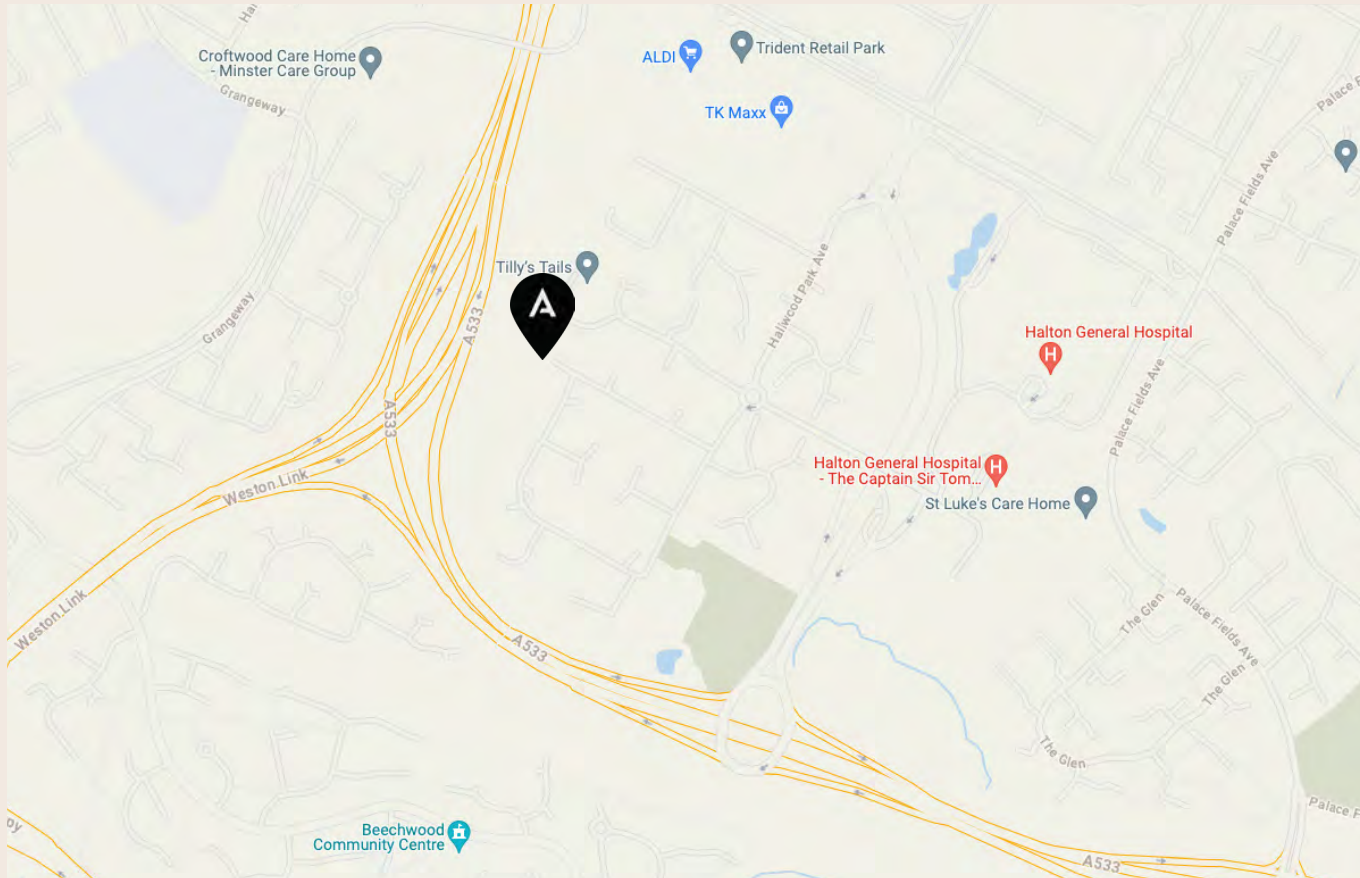
- 6 x 1 Bedroom Apartments
- 14 x 2 Bedroom Apartments

In Partnership With

Onward Homes - Onward

HALLWOOD PARK

LOCATION



Hallwood Park Eagles Way, Runcorn, WA7 2FN

CONSTRUCTION PROGRESS SUMMARY

JULY 2023

The tiling has taken place throughout the bathrooms, service test have started across the building. Floor coverings for the ground floor and the first floor have also begun, highlighting the great work of the Hallwood Park team.

CONSTRUCTION PROGRESS

July 2023



Hallwood Park, Weston Link View



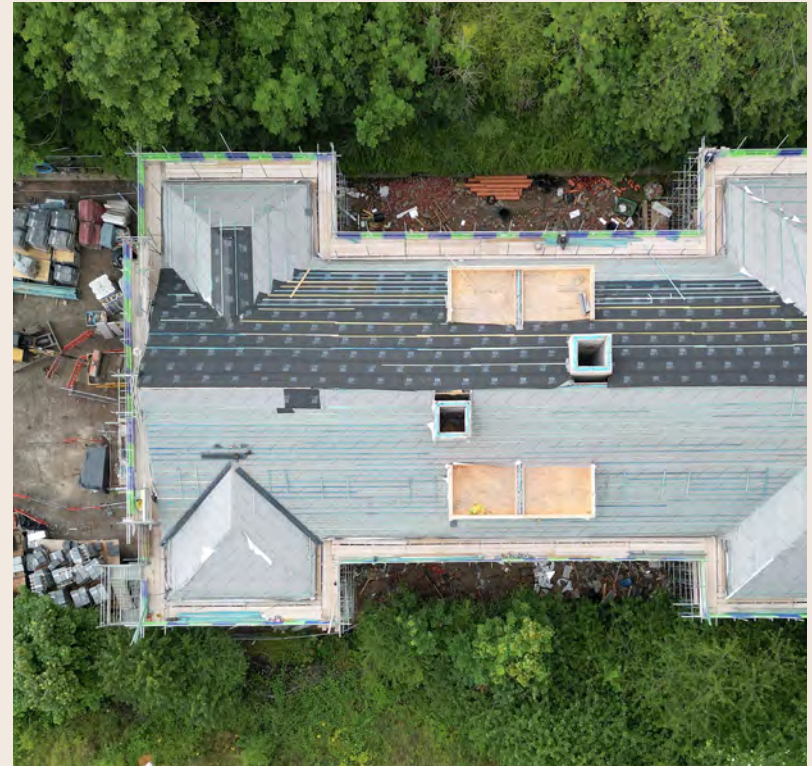
Hallwood Park, Weston Link View

CONSTRUCTION PROGRESS

July 2023



Front View of Hallwood Park, Eagles Way



Hallwood Park, Aerial View

CONSTRUCTION PROGRESS

July 2023



Hallwood Park, Rear View



Front View of Hallwood Park, Eagles Way

CONSTRUCTION PROGRESS

July 2023



Site Deliveries



Scaffolding

CONSTRUCTION PROGRESS

July 2023



Roof Construction



Roof Construction

CONSTRUCTION PROGRESS

July 2023



Roof Construction



Roof Construction

CONSTRUCTION PROGRESS

July 2023



Roof Construction



Communal Hallway

CONSTRUCTION PROGRESS

July 2023



Internal Room Framework



Internal Room Framework

CONSTRUCTION PROGRESS

July 2023



Internal Room Framework



Stairwell



HALLWOOD PARK

Affordable Rent Scheme

Contact Us Regarding Information Or Enquiries At:

0207 650 1827 | info@alderley-group.com | www.alderley-group.com | 50 Sloane Avenue, Chelsea, London, SW3 3DD