



A

THE VICARAGE PROGRESS REPORT

FEBRUARY 2023



View of The Vicarage from Palmyra Square North

THE VICARAGE

39 Apartments | Buy To Rent Scheme

Start On-Site Date: September 2022

Ground Floor

- 4 x 1 Bedroom Apartments

Floors 1 - 5

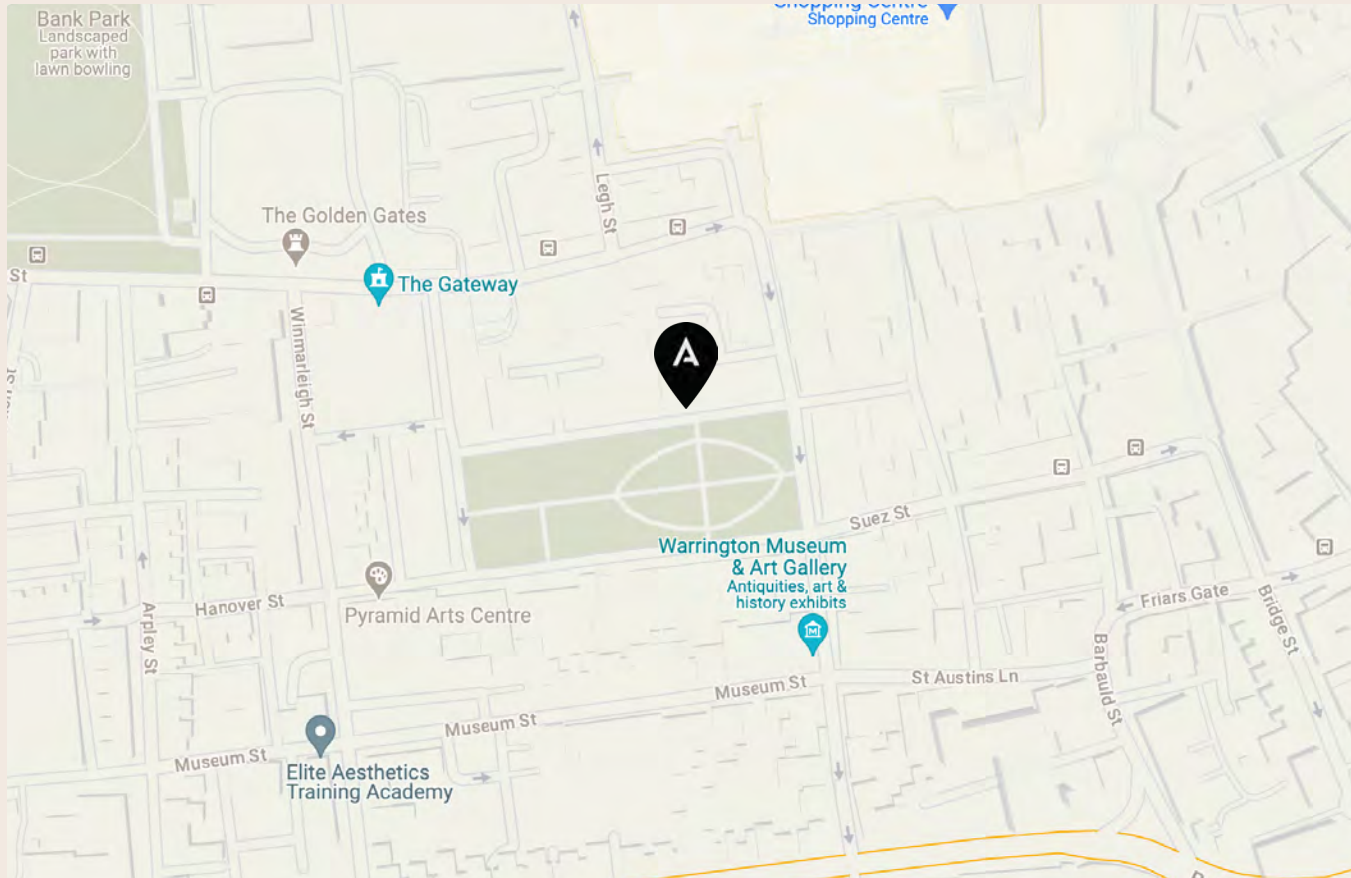
- 13 x 1 Bedroom Apartments
- 6 x 2 Bedroom Apartments

In Partnership With

Torus -  torus

THE VICARAGE

LOCATION



The Vicage, Palmyra Square North, Warrington, WA1 1JQ

CONSTRUCTION PROGRESS SUMMARY

FEBRUARY 2023

The Vicarage has continued to make progress over February. The upper floor metal deck has been installed by the team. The manufacture, supply and installation have all been started as well as the frame installations.

CONSTRUCTION PROGRESS

February 2023



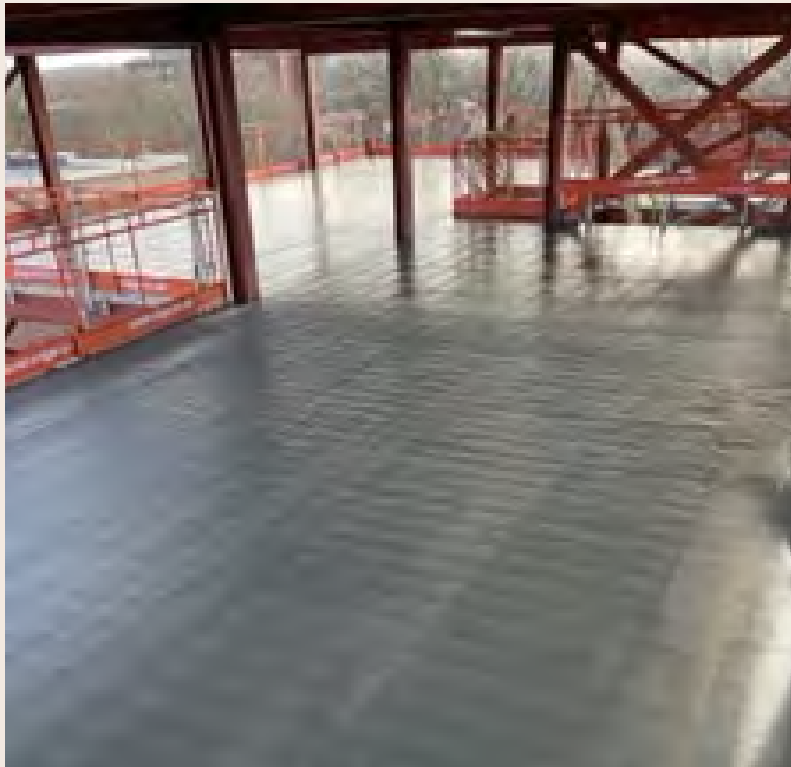
The Vicarage, Palmyra Square North View



Steelworks

CONSTRUCTION PROGRESS

February 2023



Flooring



Brickwork

CONSTRUCTION PROGRESS

February 2023



Brickwork



Soil Work

CONSTRUCTION PROGRESS

February 2023



Pipes Laid



Drainage Manhole Ring

CONSTRUCTION PROGRESS

February 2023



Brickwork



Reduce Dig Level

CONSTRUCTION PROGRESS

February 2023



Flooring



Brickwork

CONSTRUCTION PROGRESS

February 2023



Steel Delivery



Waste Disposal

CONSTRUCTION PROGRESS

February 2023



Storey Building



Pipes Laid



THE VICARAGE

Buy to Rent Scheme

Contact Us Regarding Information Or Enquiries At:

0207 650 1827 | info@alderley-group.com | www.alderley-group.com | 50 Sloane Avenue, Chelsea, London, SW3 3DD